

Information on 1stClass 4K 10.2 Tokyo

**Woll2Woll Software**

June 20<sup>th</sup>, 2018

<http://www.woll2woll.com>

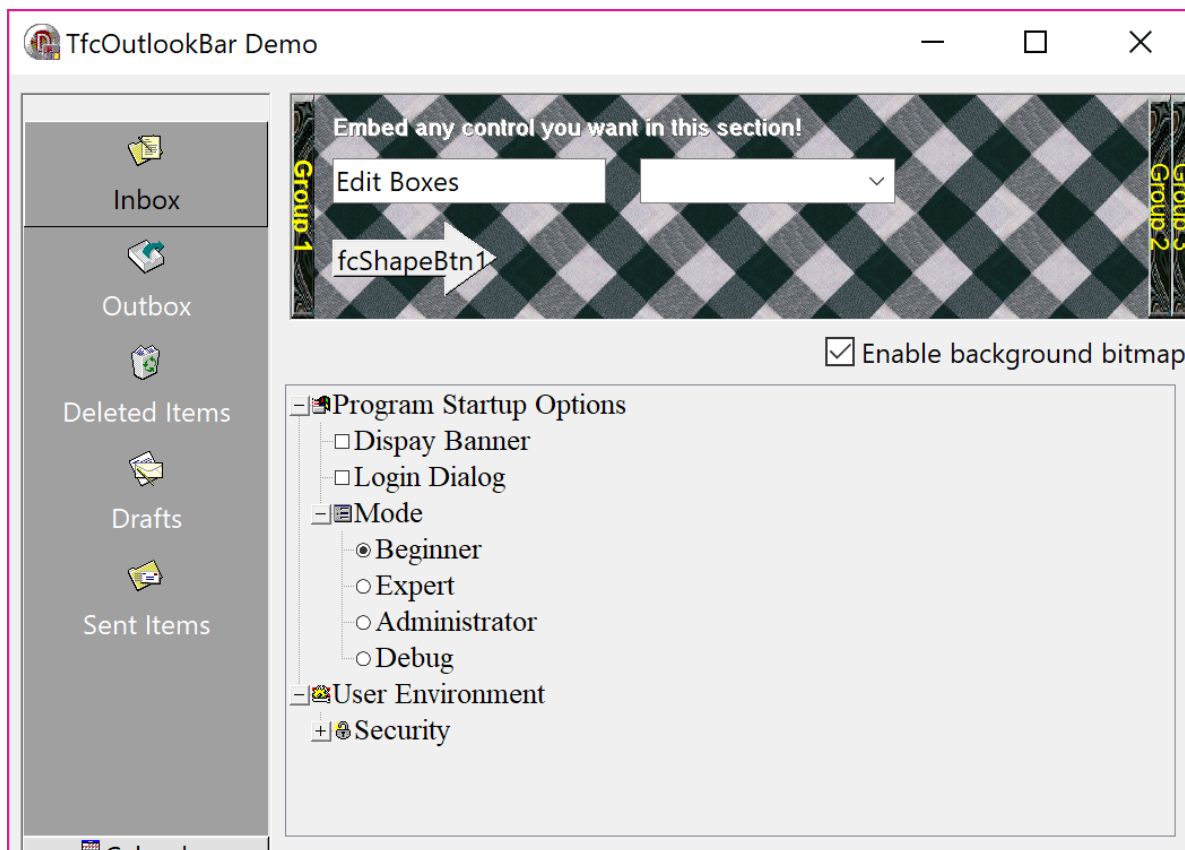
## 1stClass Studio 4K for RAD Studio 10.2 Tokyo

1stClass provides the supreme collection of components for delivering applications that will impress. From its eye-catching image-shaped forms, to its powerful and polished tree view and outlook bar components, you will notice 1stClass' quality and attention to detail.

## NEW High Resolution Elegance

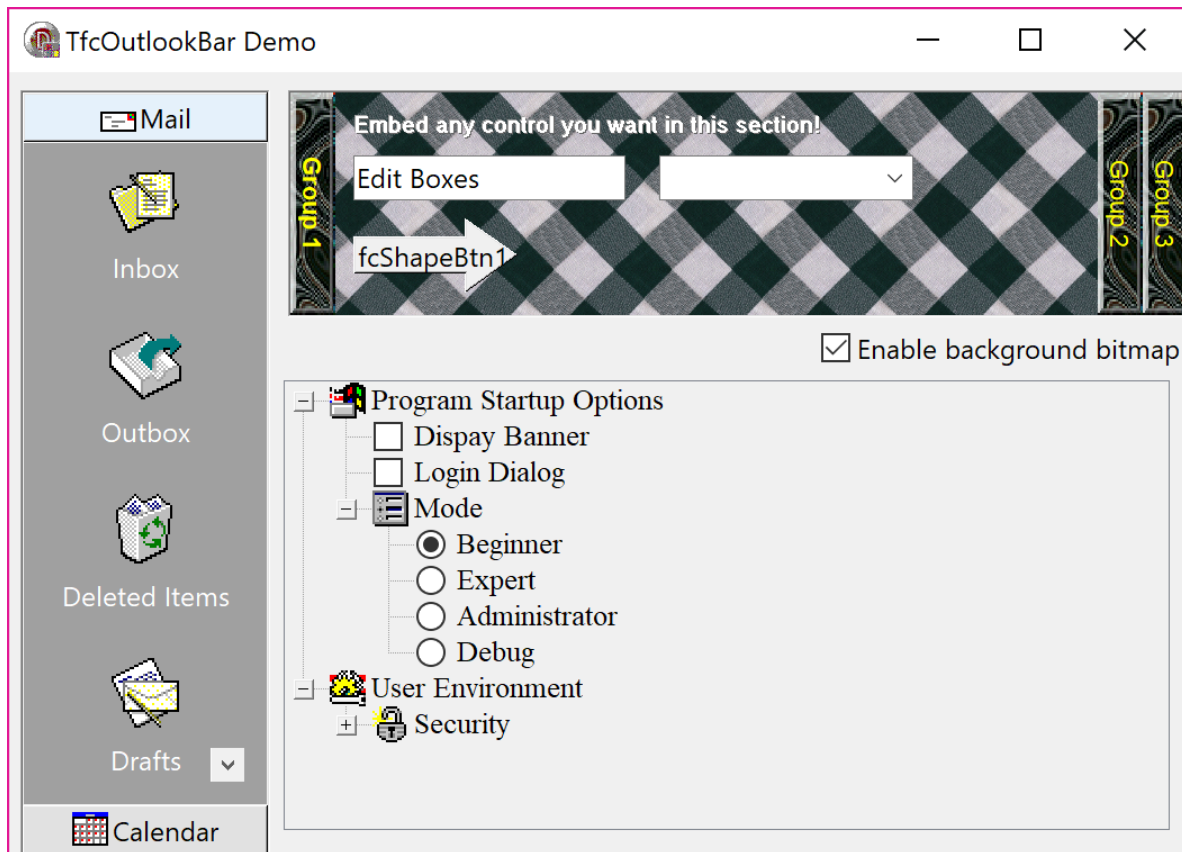
1stClass 4k finally bring support for High Resolution monitors for your Delphi applications. It automatically converts all your 1stClass controls to High-DPI. Prior versions of 1stClass would not scale text or images correctly for High-DPI, making the applications almost unusable for your end-users who use hi-res monitors. Sadly, your only alternative was to not use the features of Delphi and High-DPI.

To see the differences 1stClass 4k brings, see the following demo form compiled with an earlier version of 1stClass, and with hi-res enabled in the project options, and run on a Windows 10 display system (4096x2304 resolution) with scaling set to 200% for readability of text. Note how the outlookbar incorrectly computes button heights and widths, and the glyphs are too tiny making the application practically unusable. The treeview also has its checkboxes, radio buttons, and glyphs all of the wrong size.



*Form compiled with earlier versions of 1stClass*

Now look at the same form compiled with 1stClass 4k. Every glyph has been scaled. The buttons are of the appropriate sizes, and the treeview looks just like its supposed to.



*Form compiled and run with 1stClass 4k*

For 4k/HiRes support of InfoPower and 1stClass, we recommend the following settings in your application.

- To enable HiRes for your project - set Project | Options | Application | Enable High-DPI to true
- Use forms with Scaled=False, so they do not interfere with the auto-scaling for High-DPI
- Do not use MSSans Serif as your form's default font, which is the old default of Delphi and not vector scalable. We recommend you replace this with Segoe UI or some other vector font as they scale beautifully on hi-res and 4k screens.
- To make things easier, you may wish to set ParentFont to true for your controls if you don't want to set each font individually.
- When using custom glyphs for InfoPower and 1stClass controls, you may want to define separate imagelists for HiRes. If you do not, then the components will automatically scale the base glyph which looks the appropriate size, but it will not be as crisp and detailed. Our 4k versions have additional ImageLists you can define for other resolutions.

**InfoPower Support** - Complete Integration with the superb InfoPower multi-record controls such as InfoPower's vertical and horizontal grid controls.

	In Stock	Make	Model	ColorName
	<input checked="" type="checkbox"/>	Acura	Integra	Ebony Black
	<input type="checkbox"/>	Acura		
	<input checked="" type="checkbox"/>	Acura		
	<input type="checkbox"/>	Acura		
	<input checked="" type="checkbox"/>	Acura		
	<input type="checkbox"/>	BMW		
	<input checked="" type="checkbox"/>	BMW		
	<input type="checkbox"/>	BMW		
	<input checked="" type="checkbox"/>	BMW	Z3	GrandPrix White
	<input checked="" type="checkbox"/>	Cadillac	Catera	Light Silver
	<input type="checkbox"/>	Cadillac	DeVille	Ebony Black
	<input checked="" type="checkbox"/>	Cadillac	Eldorado	Formula Red
	<input type="checkbox"/>	Cadillac	Escalade	Clover Green
	<input checked="" type="checkbox"/>	Cadillac	Seville	Cardiff Blue

Add impact to your InfoPower grid and record-view controls. 1stClass edit controls (such as its TreeCombo) and graphic controls (such as buttons, trackbars, etc.) can be easily embedded into the InfoPower grid. Just select the 1stClass control from the standard select fields dialog boxes within InfoPower's grid designer.

The Tree Combo's icons and the Color Combo's colors can even be displayed on *every* row of the InfoPower grid.

## Tree-View Controls

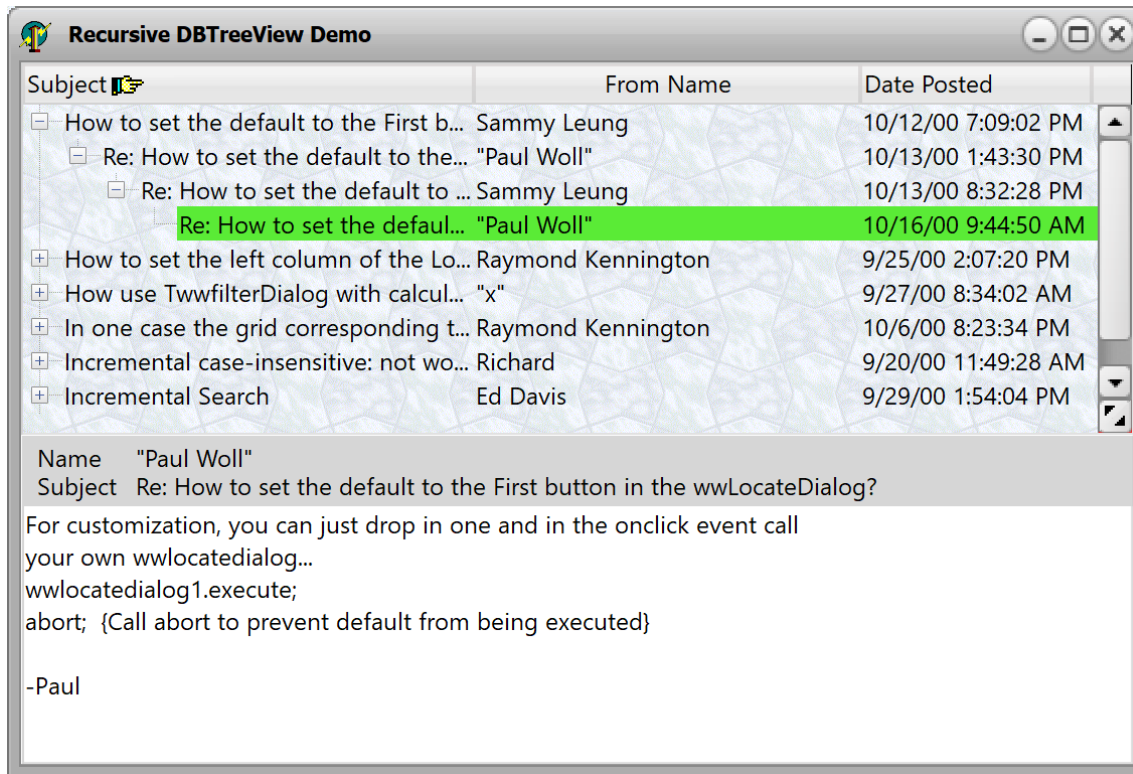


Included in 1stClass are powerful versions of both a data-bound and unbound tree view control.

**Unbound Tree View** : This versatile, elegant, and attractive tree view component supports checkboxes, radio buttons, smart URL links, three-dimensional buttons, multi-selection, custom colors and fonts, and so much more.

Use the checkboxes to store boolean information for any node in the tree. When used with multi-selection, checkboxes can be used to represent which nodes are selected. The native power of this tree view allows you to link URL addresses directly into the treeview. The treeview can dynamically open the URL address, display the node in a URL link display format, and display the hand-point when the mouse is over the URL link.

## Data-Bound Tree View



*Integrated header support when building a self-referencing data-bound tree.*

This advanced and sophisticated data-bound tree-view can single-handedly navigate all the tables and queries in your master/detail relationships. What sets this tree view apart from any other is that it is **truly a live connection** to your data. The tree is live and buffered, allowing for **extremely fast loading**, even for large tables.



Just tell the treeview control the top and bottom level datasources you wish for it to display, and the control will handle the rest of the details.

With a truly live connection to your data, filters, ranges, sorting by indexes, searches, and edits on the data are all instantly respected.

When using a sequencable back-end such as Paradox, the scrollbars are proportional and smooth.

In addition, the tree-view supports hot-tracking, checkboxes, imagelist support (so that each node can display its own icon), a background image, and more.

## Tree Combos - Easy Hierarchical Organization



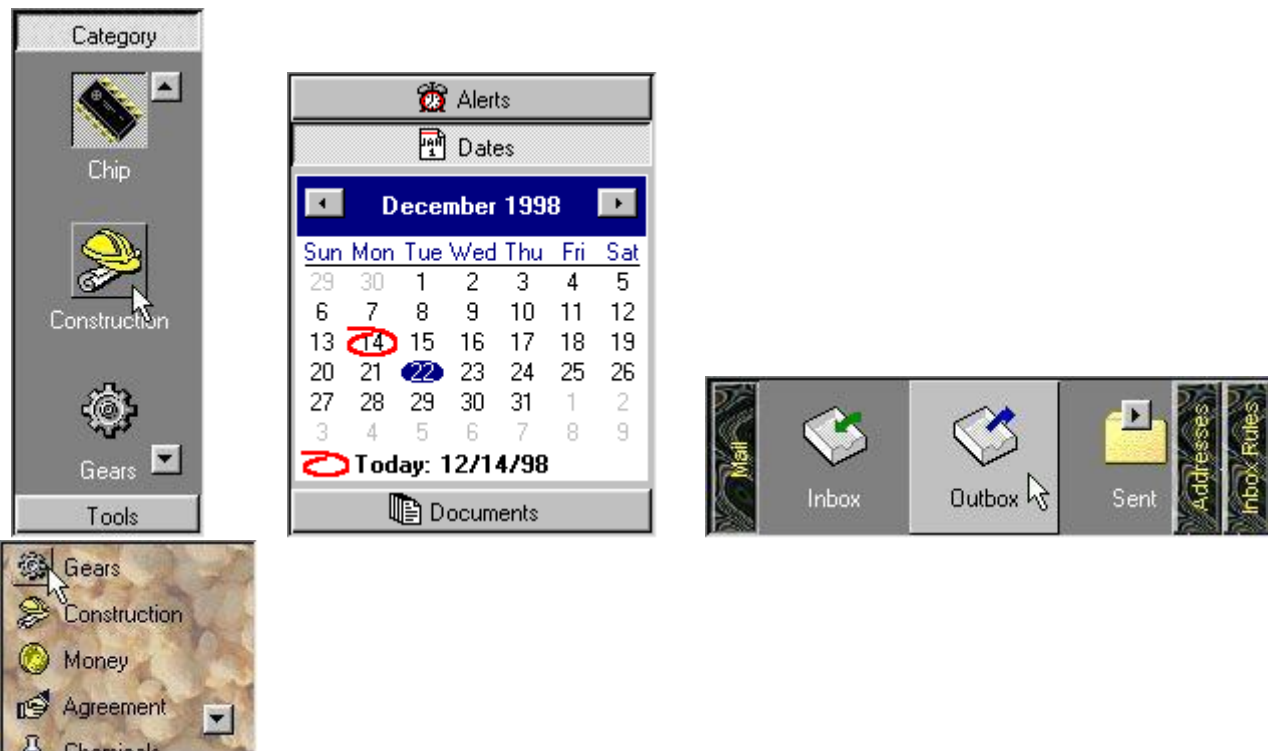
The Tree Combo is perfect to hierarchically organize and display items in a drop-down list. Similar to the combo found in the Windows Explorer address combo, the component supports most of the functionality found in the [1stClass Tree View](#), including the display of images.

**InfoPower Support!** If you are also using Woll2Woll's InfoPower, you can embed the TfcTreeCombo into InfoPower's grid and record-view components.

Fully supports the *Quicken*-style for incremental searching. While typing in text, the closest match can automatically be selected with the remaining characters highlighted.

Or you can choose to use the TfcTreeCombo in a non-heirarchical fashion to create your own image combos.

**OutlookBar** - Perfect for grouping controls or items into logical subsets.



At its most basic level, the OutlookBar can accomplish as much as users have come to expect from using Microsoft Outlook. You can display any number of groups of ListView like controls inside. Of course when switching groups, the panels and buttons slide in a smooth, animated fashion. Each of the "listviews" (OutlookLists) inside can allow it's items to be either clicked on or selected (like a radio group). As you move your mouse over the items, the items will hot-track to your mouse cursor.

However, beyond this already impressive array of features, even more functionality is possible! The buttons inside can be 1stClass Shape or Image buttons and can therefore appear however you like. Each separate group contains a container panel that allows you to drop any control you wish into the OutlookBar.

Both the OutlookBar itself, and each of the OutlookLists can be oriented either vertically *or* horizontally. To take advantage of the vertical buttons, the text inside the buttons can be easily rotated, in addition to all the features found in a 1stClass label.

The hot-track style of the OutlookList can be either that found in Microsoft Outlook, where each item's icon is embossed outward, or the style found in Microsoft Outlook Express; where each item is embossed outward and colored silver.

**Image-Shaped Forms** - Create spectacular forms of any shape and background as defined by your own custom image.

Just load any image into the image property of the TfcImageForm and your form's shape and background will look exactly like that image. With this component, your form's shape is not limited to the standard rectangles of ordinary windows.

You assign the image form a bitmap and designate one of the colors of that bitmap as transparent. Those pixels will be excluded from the bounds of the form.



Actual Form Created With 1stClass!



Another Form Created With 1stClass!

## Awesome shaped buttons

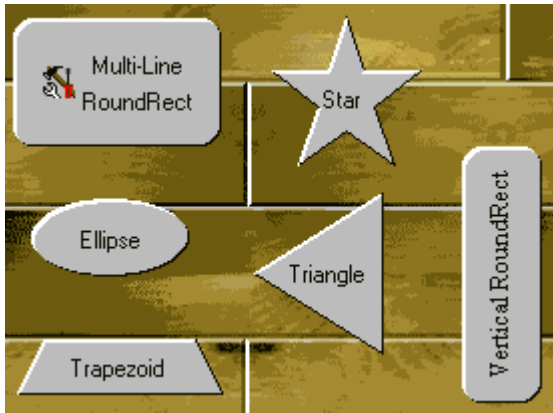


**Image Button** - This image button allows you to create your own custom images and have the button take on its shape and appearance. Defined by a specified transparent color, the boundaries of the button will perfectly match that of the defined image. Sophisticated data entry forms using clickable maps are possible with these controls.

You can define a different image for the up and down state of the button which allows you to create awesome **switches**, **led lights**, and many other types of buttons.

The abilities of the native TButton, TBitBtn, and TSpeedButton are all encapsulated by these buttons.

## Shape Button



Choose from an arrow, diamond, ellipse, rectangle, round rectangle, star, trapezoid, triangle, or virtually any other shape you can imagine. Each shape you create, even custom shapes, can be individually oriented to any of four directions: Up, Down, Left, and Right.

Unlike the standard buttons, these buttons fully support the color property. In addition, the captions of the buttons can be manipulated to same degree that our label component can.

## Ultimate Label Control



This label control enables the easy creation of impressive text effects such as shadows, extrusions, engraved, embossed, or outline effects.

Just a few of the extraordinary features found in this label control are:

- All true type fonts can be rotated a full 360 degrees.
- Impressive extrusions can be added to give a 3D look to the label and make it appear to jump out of the screen.
- Emboss the text so that appears to bevel into the screen, or come out of the screen in bas-relief.
- Have the label paint its text with a nice outline around the letters of the text.
- Give the text a shadow and place it anywhere in relation to the text.

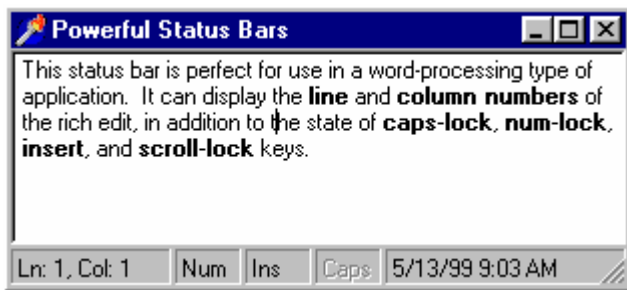
## Powerful Status Bar





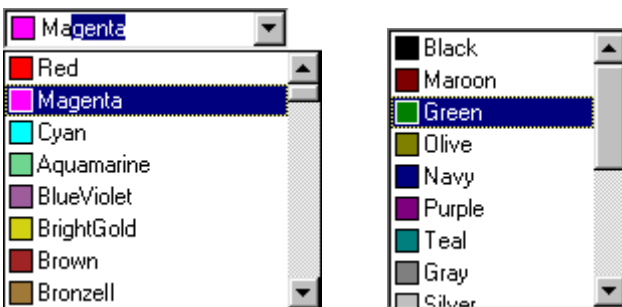
The large assortment of built in styles in this status bar will automatically allow you to add glyphs, date/time, date, time, numlock, overwrite, control and menu hints, computer info, richedit line and column numbers, and even your own custom controls.

The text that appears for any style of any of the panels can be easily overridden and/or custom drawn. In addition, the text can make complete use of the 1stClass text options, which allows for all the text effects seen in the [label control](#).



The width of each of the panels in the status bar can be individually set to a pixel value (i.e. 75 pixels) or a proportional value (i.e. 25%). As an example, in Internet Explorer, the left hand panel would be set to a value of 100%, and the rest would be set to concrete pixel values.

## Sophisticated and Flexible Color Controls



1stClass includes two powerful controls for allowing end-users to choose colors.

**Color Listbox** - When you use this control, you give your users the ability to naturally select any number of colors in an intuitive interface. Display the standard system colors, a dynamic grayscale, or fill a list with all the colors you can imagine.

**Color Combo** - This color combo provides your end-users with the ability to easily select any color you or, if you like, they, want from a powerful drop-down color list.

Both controls allow for sophisticated sorting to be applied to the list of colors. The colors can be sorted by name, so that colors will appear alphabetically ordered. They can also be sorted by intensity so that the colors can be ordered from dark to light. In fact, they can even be sorted by the colors of the rainbow.

## Versatile Font Combo Control

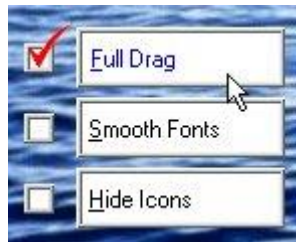


This combo control allows you to allow your end users to selectively preview and choose fonts from a drop-down list control.

Just a few of the extraordinary features found in this label control are:

- Enables your end-users to preview the fonts by just moving the mouse over the selection.
- Customize the preview text
- Contains a built-in history list that keeps track of the most recently used fonts just like in Microsoft Word!
- Supports TrueType and Printer icons.
- Contains an event that allows you to accept or reject certain fonts from appearing in the drop-down list.
- Fully supports the *Quicken*-style for incremental searching. While typing in text, the closest match can automatically be selected with the remaining characters highlighted.

## Dynamic and Expansive Button Groups



The `TfcButtonGroup` allows the creation of a collection of custom-designed buttons, radio buttons, or checkboxes from a single component. Use a this control to organize buttons into logical groups, easily create radio button groups, checklist style groups, or a group of standard buttons. It has the ability to either contain a collection of shape buttons ([TfcShapeBtn](#)) or image buttons ([TfcImageBtn](#)).

Easily allow the caption for each of the buttons to become bold as they are pressed down. Lay out the buttons in either a vertical *or* horizontal fashion. Group the buttons into any number of columns.

## Fantastic Image Manipulation



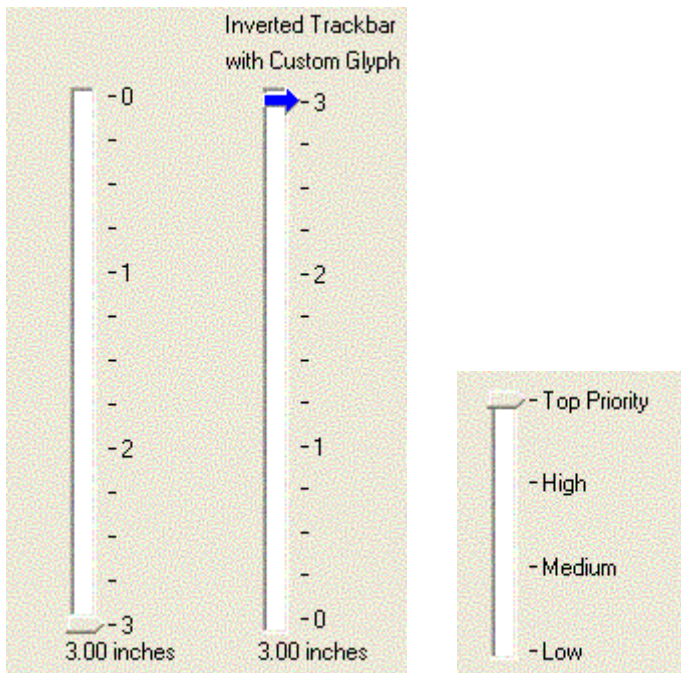
The Imager Control allows for the easy creation of spectacular images which can be integrated into any application. All of the effects available through this control can be easily manipulated by setting just a few properties.

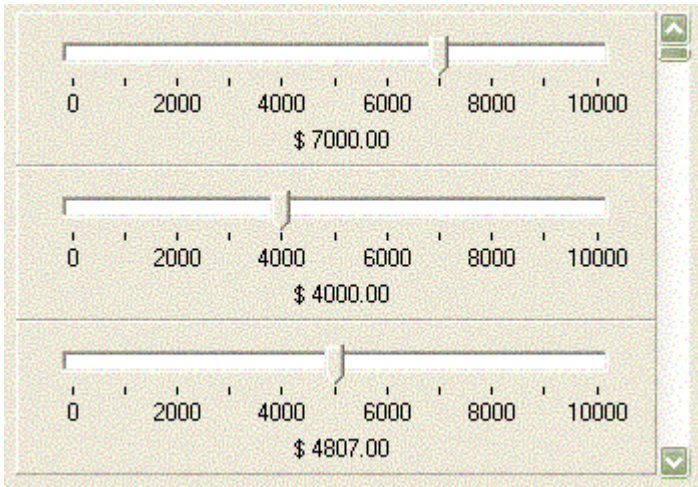
Some of the many effects that can be applied to the image are:

- Alpha blending gives you the capability of partially blending in one bitmap with another.
- You can change the colors of the image to appear in a sort of cellophane tint of another color.
- Easily adjust the brightness and contrast of your bitmaps.
- Sharpen the picture for increased clarity or apply a beautiful gaussian blur.
- Flip the image vertically, horizontally, or rotate it by any degree.
- Adjust the saturation of the colors to either take away colors, making the image appear almost black and white, or increase the colors and make the bitmap more vibrant.

**TrackBar and ProgressBar** — Use 1stClass' TrackBar and PogressBar with or without your database.

### Trackbar





- The 1stclass trackbar can be bound to a database field (integer or floating point), or can be used unbound.
- Use it inside an InfoPower vertical or horizontal grid (TwwDataInspector), or use it in a DBCtrlGrid.
- Can be inverted so that the highest most value is at the top instead of the bottom
- Can display tick text labels automatically
- Can display a formatted text value representing the current track position
- Numerous properties to fine-tune the track bar's display including custom bitmaps for the thumb
- Supports themes

### Progressbar



- The 1stClass ProgressBar can be bound to a database field, calculated field (integer), or can be used unbound.
- Use it inside an InfoPower vertical or horizontal grid (TwwDataInspector), or use it in a DBCtrlGrid.
- Can display a formatted text value representing the current progress
- Numerous properties to fine-tune the track bar's display
- Supports themes

See <http://www.woll2woll.com/Ordering.html> for further details on ordering Woll2Woll products, and special upgrade pricing.